

Maps to 50th Commemoration Hui

Driving Instructions from Matawai to Takipu Marae.

It's 41.4km from Matawai to Takipu Marae which should take about 29 minutes drive:

1. Head east on Matawai Road/State Highway 2.
2. The Marae is on the right hand side two minutes drive from Te Karaka township. It is set back 30m from the road – Wharenuui (far left), Dining Room (middle) and Kohanga Reo (far right)



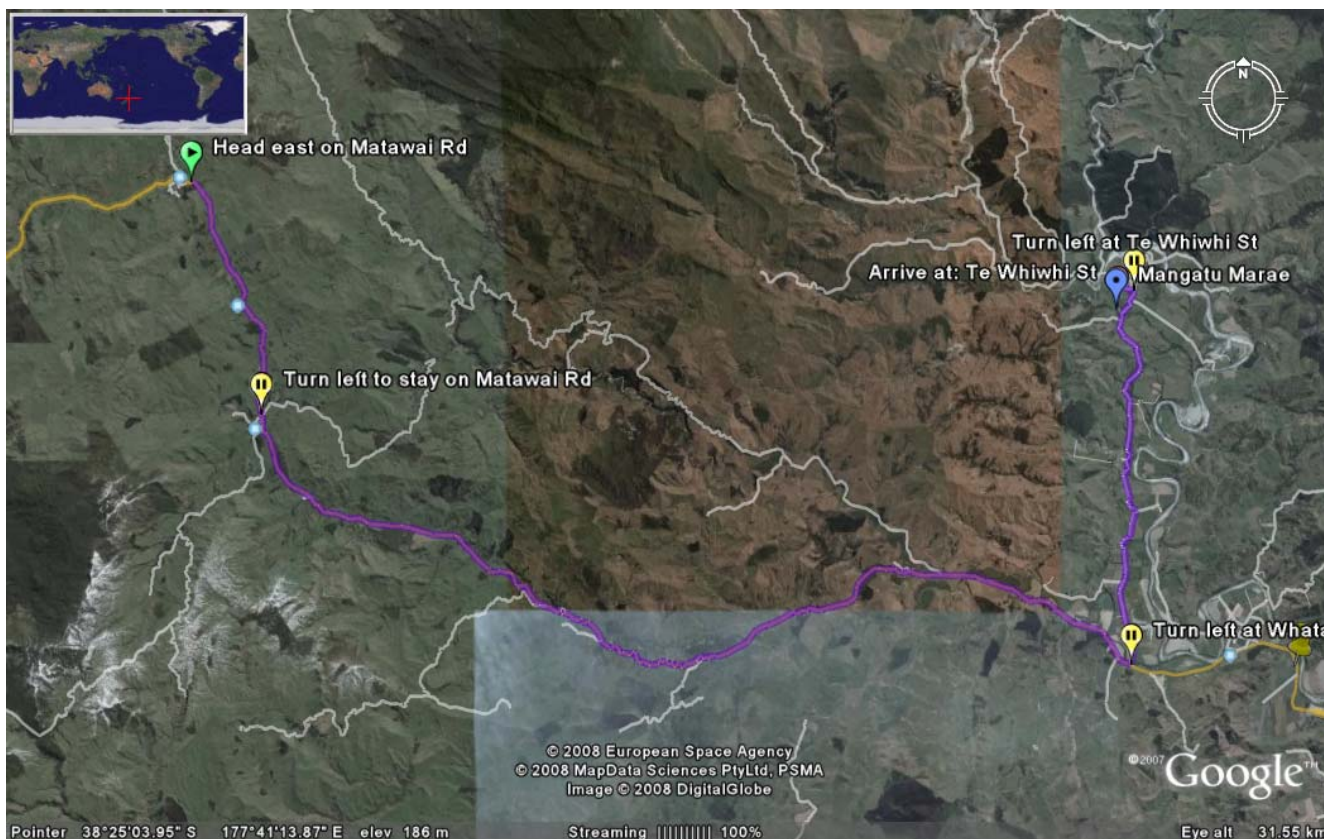
Driving Instructions from Gisborne to Takipu Marae.

It's 29km from Gisborne to Takipu Marae which should take about 27 minutes drive:

1. Get on to State Highway 2 and drive towards Matawai/Opotiki.
2. The Marae is on the left hand side ten minutes drive from the Kaiteratahi bridge. It is set back 30m from the road – Wharenuui (far left), Dining Room (middle) and Kohanga Reo (far right)

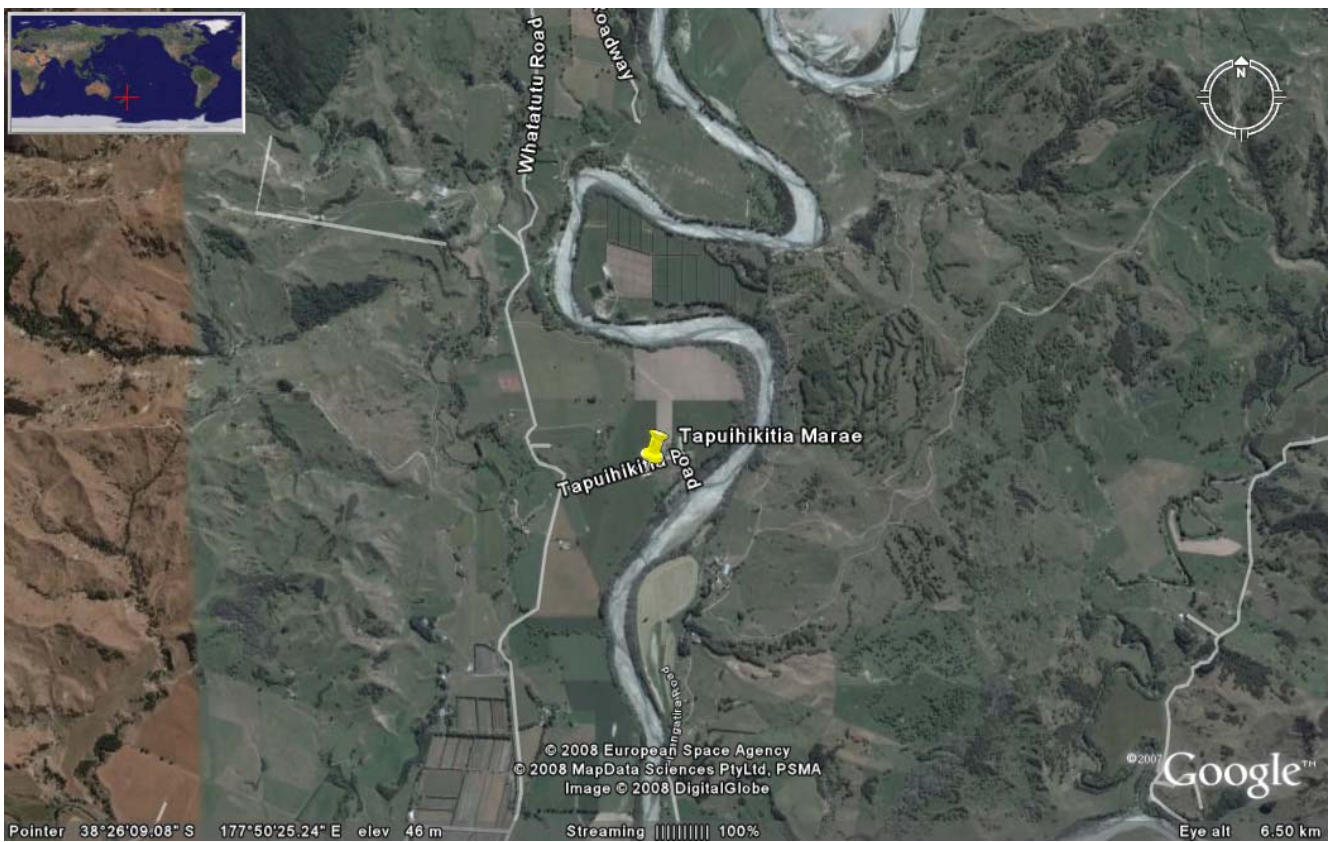
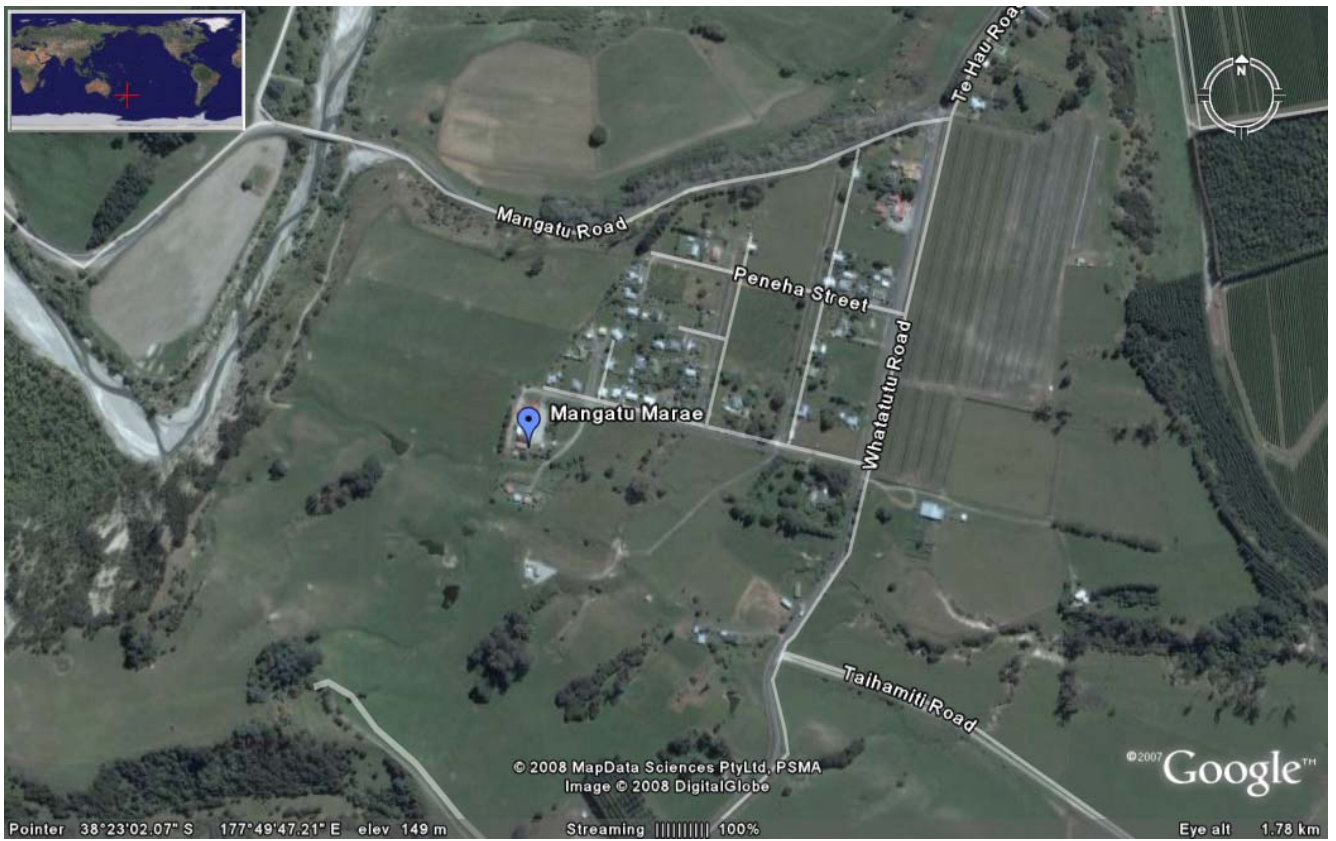
Driving Instructions from Matawai to Mangatu Marae.

1. Head east on Matawai Road/State Highway 2, drive for 36.1km.
2. Turn left on to Whatatutu Road and drive for 11km.
3. Turn left at Te Whiwhi Street and the Marae is 500m on the left hand side.
The drive from Matawai to Mangatu Marae is approximately 50mins.



Driving Instructions from Gisborne to Mangatu Marae.

1. Get on to State Highway 2 and drive towards Matawai/Opotiki for 34.6km.
2. Once you drive past Te Karaka turn right at Whatatutu Road and drive for 11km.
3. Turn left at Te Whiwhi Street and the Marae is 500m on the left hand side.
The drive from Gisborne to Mangatu Marae is approximately 45mins.



Driving Instructions from Matawai to Tapuihikitia Marae.

1. Head east on Matawai Road/State Highway 2, drive for 36.1km.

2. Turn left on to Whatatutu Road and drive for 4.4km.
3. Turn right at Tapuihikitia Road and the Marae is 500m on the right hand side. The drive from Matawai to Tapuihikitia Marae is approximately 40mins.

Driving Instructions from Gisborne to Tapuihikitia Marae.

1. Get on to State Highway 2 and drive towards Matawai/Opotiki for 34.6km.
2. Driving past Te Karaka turn right at Whatatutu Road and drive for 4.4km.
3. Turn right at Tapuihikitia Road and the Marae is 500m on the right hand side. The drive from Gisborne to Tapuihikitia Marae is approximately 40mins.